



GRDUW for ©Windows 95: The fast & easy way to duplicate your diskettes.

[What is GRDUW ?](#)

[Frequently Asked Questions](#)

[Version History](#)

[About The Author](#)

[How to Register](#)

[Update/Support](#)

[License/Copyright](#)

[Distribution](#)

[Other Programs](#)

Install.

Simply copy the package files where you want.

Restore.

Simply delete the package files.

User Guide.

When you run the shareware version of the program the About dialog box will appear showing you the program version and my address to allow you to register as soon as possible. Clicking the OK button you enter into the program.

The program is a property sheet dialog box with the following pages:

[DupDisk](#)

[Format](#)

[Repair](#)

[Boot](#)

Info Options

In almost every page you have into the upper right corner the **Drive** combo box. It allows you to select the logical drive you want to work with. The drive selection remain the same between the pages except for the DupDisk page in which only the removable drives are shown.

Development Information.

GrDuw for Windows 95 was written in C++ with the Microsoft Visual C++ compiler with the aids of the Microsoft MFC. The whole code was created and written by the Author.

Many thanks to my wife Michela and our sons Fabio and Ilaria for the patience and for the encouragement.

Many thanks to Kauppi Asko for his suggestions and beta testing.

Epilog.

I have kept this help file so small because the program is very simple to use. However if you have any questions don't hesitate to contact me. See [Contact Information](#) for my mailing addresses.

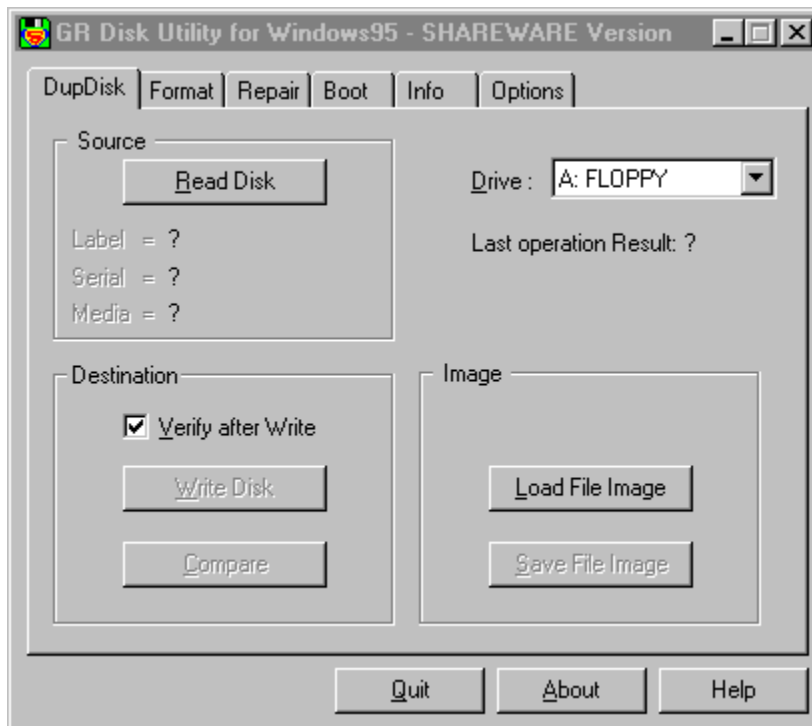
I'm checking my email at least once a week.

Windows 95, Windows NT, Visual C++ and MFC are trademarks of Microsoft Corporation.

DupDisk

This Property Sheet page dialog box allows you to duplicate your diskettes.

This is a picture of the dialog layout:



First you must select the drive from the **Drive** combo box in the upper right corner.

In this property sheet page you will find the following three groups:

- Source
- Destination
- Image

The first time you enter this page only the button **Read Disk** in the Source group and the button **Load Disk Image** in the Image group are enabled. Before continuing you must fill the program memory with a diskette image. You have two choices:

- Press the **Read Disk** button to read a diskette. If you haven't put the source diskette into the drive, the program ask for it and warns you if the source diskette isn't write protect to prevent mixing source and

destination diskettes by accident. While reading the diskette a Progress dialog will appear showing you the percentage of diskette already read.

- Press the **Load Disk Image** button to read a diskette image from your hard drive.

When the program memory has been loaded with a diskette image, the Source group show you the volume label and the serial number in order to allow you to identify the current diskette image.

When one of the previous two operations is done the other tree buttons will become active. Now you can do the following:

- Press the **Compare** button to compare the current memory image against another diskette.
- Press the **Write Disk** button to write the current memory image into another diskette. Checking **Verify after Write** spends a little more time when you write to the destination diskette but assures you that the data are correctly written on it.
- Press the **Save Disk Image** button to save the current memory image into a file image for later user. The first time you press this button you must enter a proper file name to save the file. If you enter a the file name that end with a number the subsequent saves automatically set the file name with that number incremented.

If GRDUW finds out that the diskette isn't formatted it will automatically format it.

Format

This Property Sheet page dialog box allows you to format your diskettes or your hard disk drives.

This is a picture of the dialog layout:



First you must select the drive from the **Drive** combo box in the upper right corner.

In this property sheet page you will find the following three groups:

- Media
- Mode
- Format

Media.

You can select a diskette media type if you want to be sure that the diskette is formatted with the media type you want or you can select the Auto option to leave the choice up to GRDUW.

The listed media are the standard 720KB and 1.44MB format and two

additional nonstandard formats: the 1.72MB and the 1.68MB formats. The 1.72MB media is a special format automatically recognized by Windows 95 when you use the explorer or any other Windows shell. Windows 95 is able to read and write to this kind of disk media but isn't able to format it. The 1.68MB media is the nonstandard format used by Microsoft to distribute its software packages. This format is identified as 1.68MB or MSDMF media type. The number of sectors of the MSDMF type is equal to the 1.72MB type; the difference is that that the MSDMF format only allows 16 files or directories on the disk root, while the 1.72MB, having two more tracks on the disk surface allows a root directory equal to that of a 1.44MB diskette.

Mode.

The available modes are:

- **Standard:** the classic MS-DOS format mode (interleave 1 and skew 0).
- **Optimized:** to have the best interleave and skew factor in order to speed up the read/write operations on the diskette.

The option **Standard** is renamed to **Low level** when you select a non removable drive. In this case all the media options also became disabled and the selected option is **Auto**.

Format.

You can select if you want a **Full** format or a **Quick** format.

The **Full** format performs the low level recreation of the disk tracks regenerating the sector syncs and others low level signals.

The **Quick** format only rewrite the system area in order to free up all the disk space. The advantage of **Quick** mode is the speed, while **Full** mode is slower but safer.

You have the option to verify that the format procedure was successfully completed. To enable it check the **Verify Disk After Format** check box. When the program has completely formatted the disk it start automatically a verify procedure. During the disk verify, the program is able to mark as BAD the tracks that cannot be read leaving you a safe usable diskette. This additional operation takes a little time but is recommended to avoid problems when you copy the data on the disk.

You can assign a volume label to the disk by writing a string into the **Volume Label** edit box.

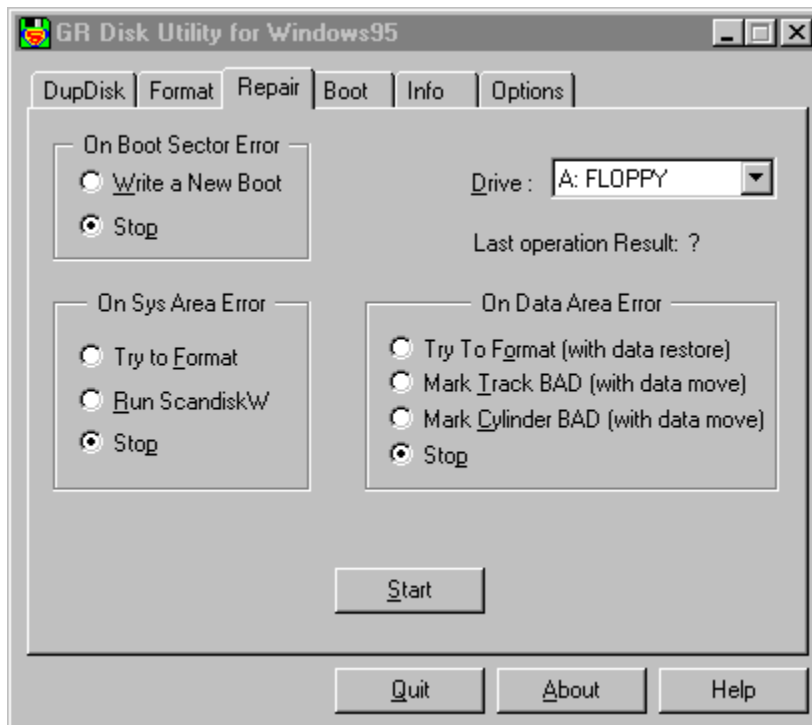
Press the **Change Volume Label** button to get a dialog box that allows you to edit the selected drive Volume Label. By pressing the *Change* button in this dialog box you will write the new label into the disk. If the disk is write

protect or isn't into the drive (for example a floppy disk) you will get a message saying you that the program isn't able to write the volume label to the disk. in this case you can correct the problem and press the *Change* button again. By pressing *Cancel* you will exit this dialog and not change the volume label. When the volume label is changed it will be inserted into the **Volume Label** edit box. In any case if you enter a string into the **Volume Label** edit box and press the **Change Volume Label** button 4this edited string is not taked into account but the program read directly from the current selected drive the volume label.

Repair

This Property Sheet page dialog box allows you to repair your diskettes or your hard disk drives.

This is a picture of the dialog layout:



First you must select the drive from the **Drive** combo box in the upper right corner.

In this property sheet page you will find the following three groups:

- On boot sector error.
- On sys area error.
- On data area error.

This page allows you to try a disk repair procedure when you find disk errors. Selecting the stop option on all the 3 groups only checks the disk and advises you if any error are found without any modification or repair action taken.

On boot sector error.

In this group you can select the **Write a New Boot** option to regenerate the boot sector or the **Stop** option to only check for errors. With the **Write a New Boot** option a new standard boot sector will be written to the disk if the actual boot sector is in error.

This option can be very useful when you have a disk virus in the boot sector.

On sys area error.

In this group you have 3 options. The **Try to Format** option allows you to try to format the track in error. This is the only valid option you have to try to recover a disk damaged in the system area. The **Run Scandiskw** option delegates the scandiskw program the difficult work of repairing this kind of an error. The **Stop** option simply inform you of the error and stop the procedure.

On data area error.

This area has the greater probability of repair success.

In this group you have 4 options:

- Try to Format (with data restore).
- Mark Track BAD (with data move).
- Mark Cylinder BAD (with data move).
- Stop. This option as before will warn you and stop the procedure.

Try to Format (with data restore).

This option reads in the track in error (doing the best to read all the sectors in error) and then tries to format the track many times. If the format succeeds the program writes back the data it was able to read, otherwise it terminates.

Mark Track BAD (with data move).

This option reads in the clusters (as many clusters that fit into a track) in error and moves them into a safe and free disk data area. Then the program marks these clusters as BAD so that the file system will never use them again.

Mark Cylinder BAD (with data move).

This option is very similar to the previous one except that it works with a disk cylinder instead of a disk track. A cylinder is a track for all the heads i.e. is a data area greater then the previous one. This option can be useful on hard disks when a complete disk area is damaged and it is safer not to use any

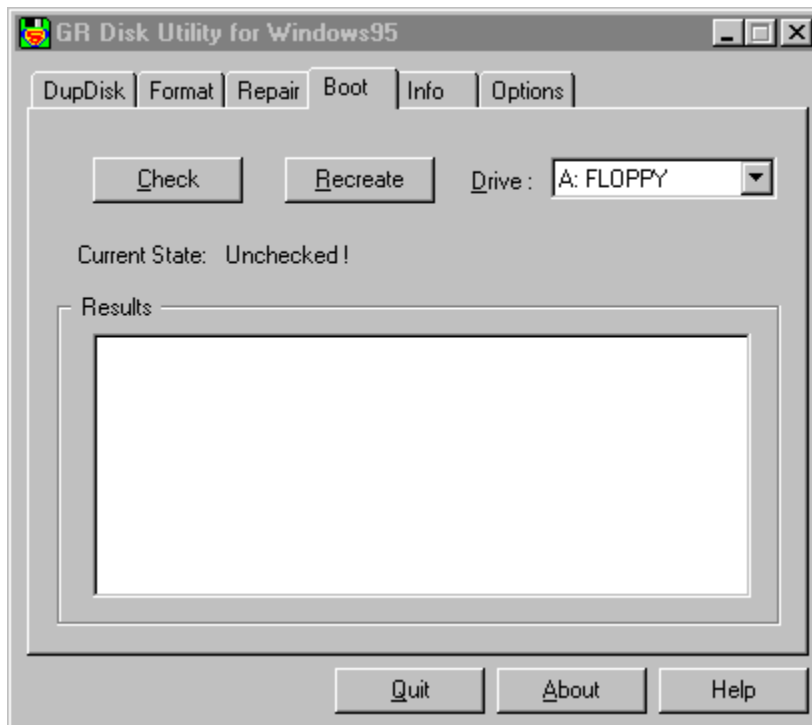
part of the damaged area but mark it all unusable.

When you have selected the desired repair behaviors of the program you can press the **Start** button to begin the repair procedure.

Boot

This Property Sheet page dialog box allows you to check and repair your diskette or hard disk boot sector.

This is a picture of the dialog layout:



First you must select the drive from the **Drive** combo box in the upper right corner.

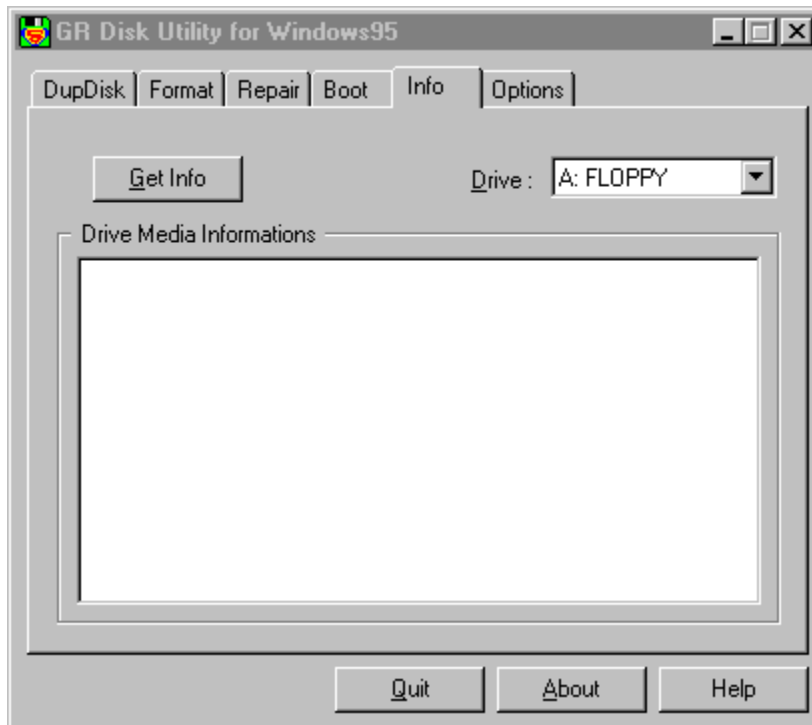
Press the **Check** button to check if the boot sector is damaged or infected by a virus. This operation will read the boot sector and check it. The check results are collected into the **Results** list box showing you all the noncompliance the procedure has found.

Press the **Recreate** button If you want to write a safe boot sector.

Info

This Property Sheet page dialog box allows you to collect some useful technical information about your diskette or hard disk. Also you can modify the drive Volume Label.

This is a picture of the dialog layout:



First you must select the drive from the **Drive** combo box in the upper right corner.

Press the **Get Info** button to fill the **Drive Media Information** list box. After the information is collected from the drive you can scroll the information into the **Drive Media Information** list box by pressing the up/down keys.

Useful information you will find into the list box are:

- the volume label of the drive
- the media type
- the boot oem string that identify who formatted the media
- the physical drive device
- the media type (standard or double space compressed)
- the total number of sectors

- the disk size
- the free disk space

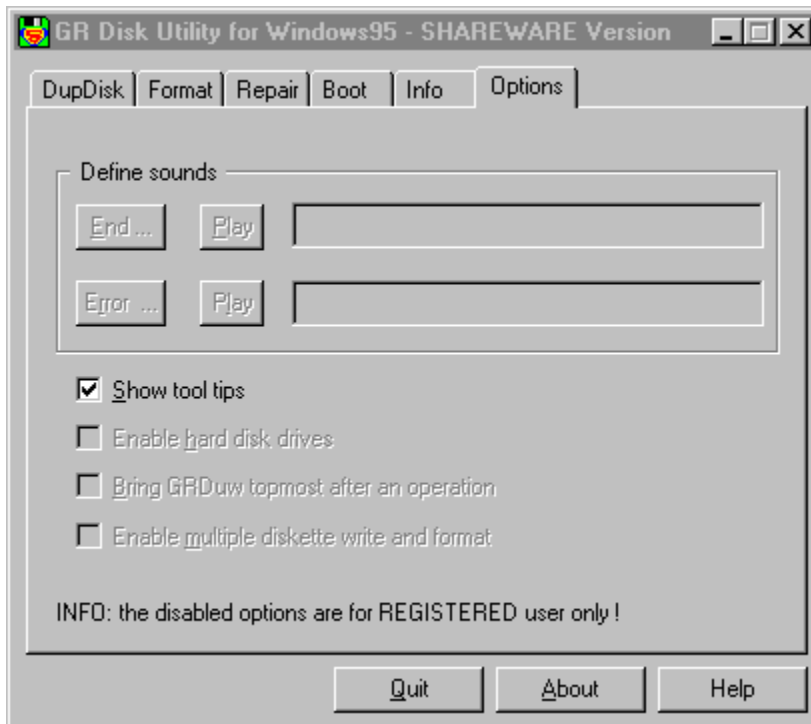
and the more advanced user will find also:

- the logical disk layout
- the physical disk layout

Options

This Property Sheet page dialog box allows you to set some program options.

This is a picture of the dialog layout:



This dialog allow you to customize GRDuw behaviors.

Define Sounds (for REGISTERED user only).

First of all you can define the sound that the program will use to signal you that the requested operation (Job) was completed or that an error happen. The two leftmost buttons **End ...** and **Error ...** allow you to select a wave file that will be displayed into the rightmost edit box (not editable).

The two intermediate buttons named **Play** allow you to check the selected sound. The shareware version define two standard sounds for these events.

Enable tool tips.

This option allow you to enable/disable the tool tips messages. The beginner users like very much that this option is checked while the expert users don't want it.

Enable hard disk drives (for REGISTERED user only).

This option allow you to enable hard disk access. As this option can be unsafe (you can format your hard disk drive) the default value is NOT checked. When you have problems with your hard disk drives you can enable it and try to repair the problem you have.

Bring GRDuw to topmost at the end of an operation (for REGISTERED user only).

This option allow you to do other jobs while your diskette will be duplicated or repaired or formatted by GRDuw. When the operation is completed the GRDuw window will became the topmost alerting you that it's work was done. Obviously you must pay attention if you use the keyboard because when the GRDuw windows become the topmost all the keystroke go to him.

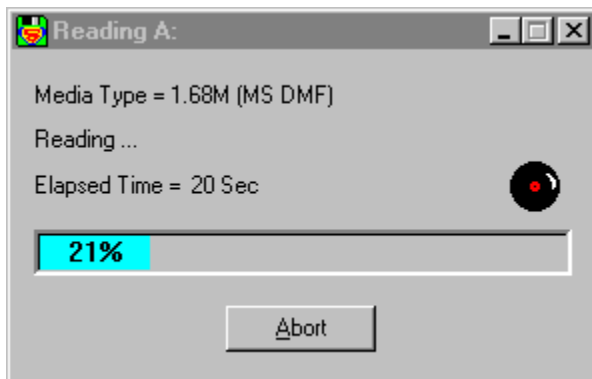
Enable multiple diskette write and format (for REGISTERED user only).

This option can be very useful when you must generate many diskettes from the same source diskette or image. In this case can be very annoying pressing any keys on your keyboard while you do other things. With this option checked you will be advised that the current diskette is completely written by the programmed "End" sound. You only have to extract the diskette from you drive, insert another diskette and wait the next sound event. The same also apply when you format a diskette. In general you have a box of diskettes to format and so this option can speed up you work and give you more time to do other things. When you want to change the source diskette you can bring the GRDuw window and press the Abort button. Easy enough?

Progress

The progress dialog allow you to see how the GRDuw work proceed.

This is a picture of the dialog layout:



The first text line show you the disk media type.

The second text line show you various intermediate task that GRDuw do on your diskette.

The third line show you the elapsed time since you start the operation.

The rightmost animated icon show you that the disk is running.

The colored bar with inside the percentage of execution allow you to visual check how many work is done with a simple look. This bar is colored in different manners based on the current operation. This also allow you to take a quick look in order to known what the program is doing. The colors are as follows:

Operation	Bar color	Text color
Formatting	red	white
Verifying/ comparing	green	black
reading	cyan	black
repairing/writing	blue	white

The **Abort** button allow you to abort the current operation. When you press it the text inside it change in **Wait....** This alert you that the program has registered you command but must synchronize with the disk activities in order to execute it. When the synchronization is done this dialog disappear.

What is GRDUW ?

GRDUW is a 32-bit disk utility written for Windows 95.

What is for ?

With this utility you can do the following things:

- Format diskettes (the supported media are: 720KB, 1.44MB, 1.68MB and 1.72MB). The 1.68MB media corresponds to the Microsoft DMF (Distribution Media Format).
- Format your hard disks.
- Format in read/write access speed optimized mode or in standard MS DOS mode.
- Duplicate your diskettes on a single drive in two pass: read source disk and write destination disk. Very Fast !
- Save your diskette image into a file in your hard disk for a late use.
- Retrieve the diskette image from a file and write it to a diskette.
- Compare a diskette image against another diskette.
- Check the boot sector of you diskette or hard drive for viruses and recreate a new safe boot.
- Repair your diskettes or hard disks.
- Get technical disk information (logical and physical layouts).

GR Disk Utility for Windows 95 can replace and enhance the standard Explorer functionality when you need to format or duplicate a disk. Have you tried to format a NOT FORMATTED diskette with the Windows 95 explorer ? I'm sure NOT! To do a simple test take a diskette and pass on it a big magnet many times. Then put it in your diskette drive an click the right mouse button on the explorer diskette drive item to select the "Format ..." option. What happen ? Check also how many time it take to duplicate a formatted diskette from the explorer ! What the explorer do when you try to duplicate a DMF (1.68MB) diskette ?

Why to use GRDUW ?

GRDUW offer you many advantages over similar utilities you can find and over the standard Windows 95 explorer functionality. Here are some of these reasons:

- It has an intuitive and easy user interface.
- It can format a diskette in an optimized layout that speeds up the read/write work.
- It support the nonstandard software distribution formats.
- It can duplicate your diskette very fast.
- It can repair you diskettes and your hard disks.

Current GRDUW Limitations.

- The program currently only works on Windows 95 and refuse to run on other operating systems (Windows NT).
- A Windows NT version IS NOT currently available.
- The program was tested on standard 1.44MB floppy drives. The 2.88MB drive was never tested (beta tester welcome).

Frequently Asked Questions

Q: Did GRDUW run on Windows NT ?

A: No, for the moment it only works on Windows 95.

Q: Did GRDUW support 2.88MB diskette drive ?

A: No, support for this kind of drive will be added in a future release.

Q: Is the diskette image a binary copy of the diskette ?

A: Yes, the content of the diskette image is a one to one binary image of the diskette contents.

Q: Why is a 1.72MB diskette shown by the Win95 explorer as a 1.66MB ?

A: Click your desktop "My Computer" icon, click the right button on the floppy icon and select the "Properties" menu option. A property sheet dialog box will appear. On the "General" Tab you can see the detailed information on the diskette. The row that start with "Capacity:" will show you two numbers: the first is 1.745.408 bytes while the second is 1.66MB. The first number is the EXACT diskette capacity, while the second is the approximate capacity calculated with minor precision that is currently shown by explorer. It is calculated as follows:

$$1,664550781 * 1024 * 1024 = 1745408.$$

A kilobyte is 1024 bytes, not 1000.

Q: How I can associate a .dim extension to GRDuw.exe ?

A: GRDuw already do this automatically when it run.

Q: How I can create a desktop icon over which to drop my .dim files ?

A: Click the right mouse button on the desktop. Select the "New" option and them the "Shortcut" option. You get the "Create Shortcut" Wizard. press the "Browse..." button and locate the GRDuw.exe file. Press the "Next" button and then press the "Finish" button. Your desktop has now a GRDuw icon on which you can drop your .dim (disk image) files.

Version History

November 1996 : Version 1.92.

- Fixed a bug into the shareware expiration time calculation that prevent the shareware version 1.91 of the program to run after 04 November 1996.
- Expanded the payment methods to allow a more easy and automated registration of the program (see [How to Register](#)).

October 1996 : Version 1.91.

- Integrate more tightly into the explorer shell automatically adding ".dim" extension support.
- Added a new property sheet page [Options](#) to set the following new program options:
 - Show tool tips.and **for the registered users only:**
 - programmable sounds.
 - enable hard disk drives (to avoid unsafe operations).
 - bring GRDuw topmost after an operation.
 - enable multiple diskette write and format.
- Added the free space display to the [Info](#) property sheet page.
- Added an animated icon to the [Progress](#) dialog.
- Moved the "Change Volume Label" button from the [Info](#) property sheet page to the [Format](#) property sheet page.
- Changed the color of the progress bar as follows:
 - while formatting : red bar and white text.
 - while verifying/comparing: green bar and black text.
 - while repairing/writing: blue bar and white text.
 - while reading: cyan bar and black text.
- The title of the progress bar was changed in order to show the volume label of the current disk.
- Added the About button to the main dialog to allow a more easy access to the program information.
- Delete an un useful test during the compare diskette procedure that warning the user on diskette not write protect. As the user employ the compare just after it has write a disk is obvious that the diskette isn't write protect.
- The [Progress](#) dialog size was reduced.
- Added to the [DupDisk](#), [Format](#) and [Repair](#) pages a text that explain the "Last operation Result". This text explain if the last operation has been

- completed successfully or not.
- After a diskette read the focus now remain to the write button so that it is possible to write another diskette by pressing the return key only. Also enabling the "enable multiple diskette write" check box in the options page you can write more diskette simply extracting the written diskette and inserting a new one.

August 1996 : Version 1.82.

- Added a help file instead of a simple manual.txt file.
- Easy registration is now possible by means of the grduw.key file. In this way a registered user can update his current version by downloading the latest shareware version.
- Added a starting parameter so that it is possible to make a grduw desktop link icon and drop an image file onto it to load it automatically. It is also possible to associate GRDuw at the .dim extension so that double clicking on a .dim file GRDuw is executed and it load the specified image file. See [Frequently Asked Questions](#) to see how.
- Corrected a bug on handling SUBSTed disk drives.
- Added a minimize box so that is possible to minimize the progress and the main dialogs. The task bar shows the percentage of the operation as the main dialog title.
- Fixed a bug when duplicating a diskette and the destination diskette was never formatted.
- Allowed the read of a disk file image that is not of the exact size of a disk media. The current image file loading procedure check the first 512 bytes of the file in order to see if this file piece is eligible to a boot sector. If you load an image file smaller then the original disk size the not read data are random.
- Minor dialog text refinements.

June 1996 : Version 1.71.

- Added the volume label to the drive list box in order to better identify the right disk drive.
- The image file format was changed in order to accept a pure binary disk image.
- As a simple help guide tool tips have been added to the dialogs.
- In the duplicate tab a "Verify after write" check box has been added to allow safer diskette write.
- Minor dialog restyles.
- Minor bug fixes.

April 1996 : Version 1.51.

- This is the first distributed shareware release.

GrDuW exists now in English only. If you would like to provide translations of GrDuW or the documentation in another language, please contact me.
See [Update/Support](#)

How to Register

WHY TO REGISTER ?

Registering this software give you the following advantages:

- You are inserted into our email list in order to be advised when new major release will become available.
- You will receive our full support via email.
- You will receive a license to use your personal copy of the program at your home and at your office in the form of a key file. In this way you are NOT in violation of international Copyright law!
- You will be entitled to get one issue of the "Best of the Author to Vendor (A2V)" CD-ROM at a cost of only US\$5.95 + S&H. See the file cert0001.doc for more detailed information.

HOW TO REGISTER.

You are granted that your fee will be taken only after the registered program or key is delivered to you (via email or snail mail)!

In order to register you must compile the form that appear running the register.exe application that you find into the package.

```
{button Run register.exe right now !,EF("register.exe","",1,"")}
```

You must perform the following symple steps:

STEP 1: Insert all your personal data.

Compile the "Register To:", the "Email" address and the "Postal Address". Give us your comments if you want.

STEP 2: Select the software you want to register.

Specify the "Quantity" and the "License" type you want. The available License types are the following:

Single user license grant you to use the program at your home and at

your office.

Site license grant you to use the program inside a single organization for an area of up to 100 miles (160 Kilometers) in radius.

World-wide license grant you to use the program inside a single organization all over the world.

STEP 3: Select the payment method.

You have many options: cash, cash to the author (discount 10%), check or money order, VISA, Master Card, American Express, First Virtual and Invoice.

STEP 4: Send the form.

If you have an email connection you can send this form directly to the "Kagi" shareware registration service, otherwise you must postal mail the form to the address specified into the lower right of the dialog.

REGISTER NOW.

Click on the button below to register right now !

```
{button Run register.exe right now !,EF("register.exe","",1,"")}
```

HOW DO YOU GET AFTER REGISTER.

You will get an email from "Kagi" that confirm you that your payment has been processed. Also you will get an email from the "Author" with attached your personal copy of the **program.key** file, based on your personal data. This key file will transform your shareware program into a registered one and must be placed where reside the program executable.

IMPORTANT NOTE:

If you want any information about the program please contact only the author (see [Contact Information](#)). Be sure to include all your data into the registration form to allow us to build your personal program registration key file !

Update/Support

Updates.

As soon as you are registered, (until further notice) all updates are free, provided that you get the latest version yourself. Just install the new (Shareware) version over your current version.

If you are a registered user the only important thing is to keep the file [GRDuw.key](#).

Where to find the latest Shareware version.

If you are on internet, check out one of my WEB home pages:

<http://www.bsoftware.com/cgi-bin/fetchsan.cgi?AuthorID=499,LocationID=1>
<http://mini.net/cgi-bin/sax?2347>

If you don't have access to a modem, you can request the program directly from us by sending the registration fee. We will mail to you a diskette with the latest available version.

Bug reports

If you find a bug in the program you can report it at one of the addresses mentioned below. Please provide the following information:

- an exact description of the bug (how can it be reproduced?)
- Version number of the program (to get it you must click on the "About ..." button.
- Windows version(for example 4.950).
- For Fatal errors: The error address and the contents of the error box displayed by Windows 95.

Support

If you have any problem please first read the [Frequently Asked Questions](#) and check if you find an answer there.

If you still have questions or bug reports, you can reach us at the following addresses: [Contact Information](#)

Software License/Copyright

Software License.

Please read the following lines carefully before using this software. If you disagree with any of the following, you are not allowed to use this program. You **MUST** then delete it immediately.

Shareware Version.

You have the right to test this program for a period of **one month**. Use of this software after the trial period of one month is in **violation of International Copyright law!** It is also unfair to the author, who has spent hundreds of hours developing this program. You are allowed to copy this Shareware Version (and ONLY the Shareware Version) and give it to any other person, as long as it is not modified in any way. Under modifications is understood the changing, adding or removing of any files of this package without the author's written permission.

Registration.

This program is neither freeware nor public domain. Use after the 30 day trial period requires registration. See [How to Register](#) for details on registration.

Registered version (personal license).

The registered version may be installed on as many computers as desired, as long as it is ONLY running on one at any one time (i.e. one installation at home and one at the office used by the same person). The usage by multiple people at the same time (on multiple computers) requires additional licenses.

Licensee shall not use, copy, rent, lease, sell, modify, decompile, disassemble, otherwise reverse engineer, or transfer the licensed program except as provided in this agreement. Any such unauthorized use shall result in immediate and automatic termination of the license.

Multiple licenses (additional licenses).

Multiple licenses allow an institution, company or school to install the program on multiple computers or on a server. It must be guaranteed that

the program does not run on more machines at the same time than there are licenses purchased.

All licenses are issued to the same (company) name.

Each additional license also allows a single user to use the program at home.

Licensee shall not use, copy, rent, lease, sell, modify, decompile, disassemble, otherwise reverse engineer, or transfer the licensed program except as provided in this agreement. Any such unauthorized use shall result in immediate and automatic termination of the license.

Liability.

We try to keep our software as bug free as possible. But it's a general rule (Murphy's), that no software ever is error free, and the number of errors increases with the complexity of the program. That's why we cannot guarantee that this software will run in every environment, on any Windows 95 compatible machine, together with any other application, without producing errors. Any liability for damage of any sort is hereby denied. In any case, the liability is limited to the registration fee.

Please test this program with noncritical data. We cannot guarantee the safety of your data. Should you detect errors before registration, you accept them if you register. Any description of bugs will be accepted, but we cannot guarantee that we will be able to correct them.

All mentioned trademarks and copyrights belong to their respective owners.

Legal domicile is Torino, Italy.

Distribution

I prohibit the distribution of outdated versions of the package, without written permission. If the version you have obtained is over twelve (12) months old, please contact us (see [Contact Information](#)) to ensure that you have the most current version.

Vendor information.

You are allowed to copy this Shareware Version (and ONLY the Shareware Version) and give it to any other person, as long as it is not modified in any way. Under modifications is understood the changing, adding or removing of any files of this package without the author's written permission.

Small additions to the package, such as the introductory or installation batch files used by many shareware disk vendors, are acceptable.

You are NOT allowed to pack this program together with a commercial program or a book.

A distribution fee may be charged for the cost of the diskette, shipping and handling, as long as the total (per disk) does not exceed US\$8.00 in the U.S. and Canada, or US\$12.00 internationally.

You are encouraged to put this program on as many BBS systems as possible. The distribution on CD-ROM is also permitted, as long as the original files are not changed in any way. Please contact me (see [Contact Information](#)) if you want to distribute the program with a different installation program, changed files etc.

This package CANNOT be sold as part of some other inclusive package. Nor can it be included in any commercial software packaging offer, without a written agreement from the author.

All rights not expressly granted here are reserved to Roberto Grassi.

We would appreciate copies of anything you print regarding this software package. Please send us a copy of any reviews, articles, catalog descriptions, or other information you print or distribute regarding this package. Thank you for your time and assistance and for supporting the shareware marketing concept.

Vendor Update Program.

Most vendors have standard procedures for acquiring new files. They get them from other vendors, BBSs, etc. Most authors cannot afford to mail disks to hundreds (perhaps thousands) of vendors. However, some vendors prefer to obtain programs directly from the authors. If you would like to

obtain programs directly from us, automatically, then please help us to cover the cost.

Under this program you can receive updates for an entire year for only \$10 per program (this helps to offset our costs).

To receive updates, simply send us a letter (see [Contact Information](#)) with your name, company name, mailing address, the name of the person we should contact (such as your disk librarian), the program (or programs) for which you would like to receive updates, and a cheque or money order for \$10 for each program. See [How to Register](#) for payment details.

All vendors participating in our Vendor Update Program will automatically receive any NEW programs which we may release while their Vendor Update Program is in effect.

The Vendor Update Program is only intended to help us cover our expenses in those cases where a vendor desires to obtain the program directly from us. If you have other standard ways to obtain programs, then you may prefer not to use our Vendor Update Program.

Internet email:

roberto.grassi@kagi.com

Snail mail address:

Roberto Grassi
P.O.Box 48
Leumann (Torino), 10196
ITALY

ING. Roberto Grassi.

I'm a software developer since 1978 (BASIC language) when I reached my first degree in Electronics. Then I started working and studying to become an Electronic Engineer in 1985 with full votes.

My daily job is to write embedded applications in C/C++ language for a secure communications company in Italy. I'm involved in the development of the operating system and all the development utilities connected to them (debugger, project management, project backup etc..).
I have a 7 years programming experience in 'C' and of 3 years in 'C++'.

I also develop some, I hope useful, PC utilities that I'm proposing to the shareware world.

Please feel free to contact me if you need a software consultant and/or you want to start a business with me.

Other Programs

GRBack.

GRBack is a 32-Bit program to backup your drives data. **GRBack** work well on Windows 95 or Windows NT. **GRBack** is a great backup utility designed to backup one drive data into another drive either fixed, network or removable. It recreate the exact source directories structure and for each directory it create a PKZIP compatible archive with full long file name support. It is fully customizable in order to include or exclude files or skip whole directories via simply \$backup.??? text files located into your source directories.

GRBack is fully integrated with the Microsoft System Agent that come with the Microsoft Plus! package (Windows 95 only) and automatically insert a task into the task list for you to start the backup at every system start.

GRBack has an easy and intuitive user interface.

Search it on the WEB (Simtel) and try it :

<http://www.simtel.net/pub/simtelnet/win95/diskfile/grback??.zip>

